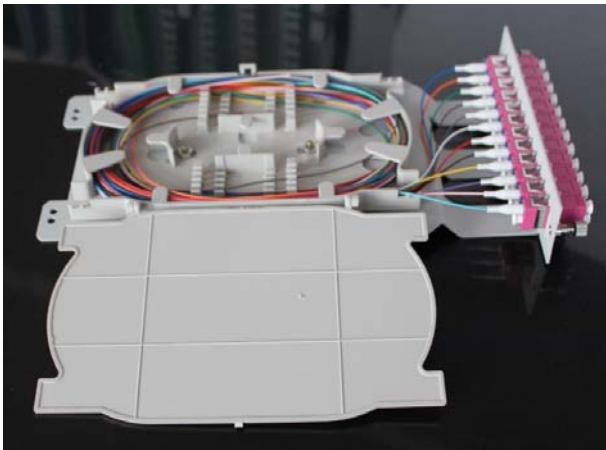
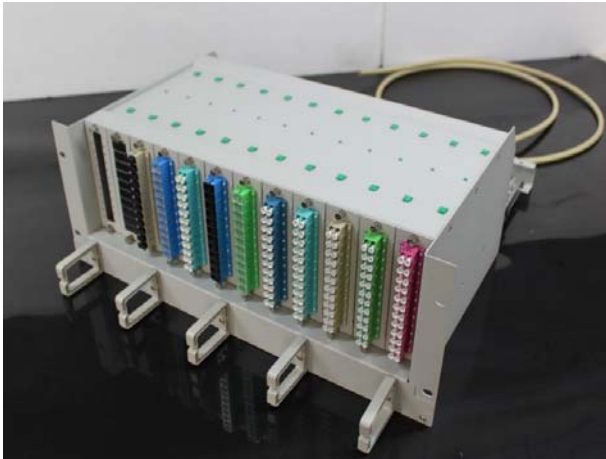


Rack mount patch panel

Part No.:TK0701-32



**Now launch!**

**Features**

- High density
- Material: Steel or Aluminum
- Pre-terminated and tested
- Outline Dimension(L×W×H)mm : 484×349×178mm
- Slide with tray plate
- Thickness:1.5mm
- Colour:RAL7035,RAL9007
- Suitable for SC,LC,FC,ST,E2000
- 12pcs module ,to easy replace
- Easy to maintain and extend

Order information

| Part No.              | Adapter        | Capacity          | Accessory                        |
|-----------------------|----------------|-------------------|----------------------------------|
| TK0701-32-4USCS144-00 | SCS:SC Simplex | 144ports,144fiber | 00:without adaptor & pigtail     |
| TK0701-32-4ULCD144-10 | LCD:LC Duplex  | 144ports,288fiber | 10:with adaptor, without pigtail |
| TK0701-32-4UFCS144-00 | FCS:FC Simplex | 144ports,144fiber | 00:without adaptor & pigtail     |
| TK0701-32-4USCS144-11 | STS:ST Simplex | 144ports,144fiber | 11:with adaptor, with pigtail    |