

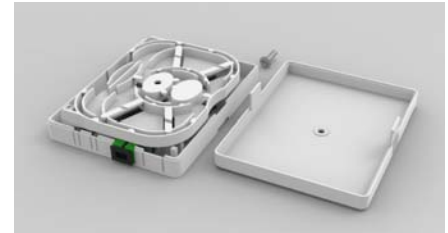
Fiber Wall Terminal Box-2cores Part No.:TK0601-2F

Features

- Locked with special screw for security
- Suitable for 2pcs SC Simplex / LC Duplex adapter
- Outline Dimension((L×W×H)mm : 104×84×21
- Material: ABS
- Indoor (wall mounting)

Application

- Optical Telecommunication System
- LAN, Optical fiber Communication System
- CATV Networks
- FTTH access network



Order information

| Part No. | Description |
|-----------------|--------------------------------------------|
| TK0601-2F-2SC-0 | 2XSC/PC Simplex SM Adapter without pigtail |
| TK0601-2F-2SC-P | 2XSC/PC Simplex SM Adapter with pigtail |
| TK0601-2F-2LC-0 | 2XLC/PC Duplex SM Adapter without pigtail |
| TK0601-2F-2LC-P | 2XLC/PC Duplex SM Adapter with pigtail |